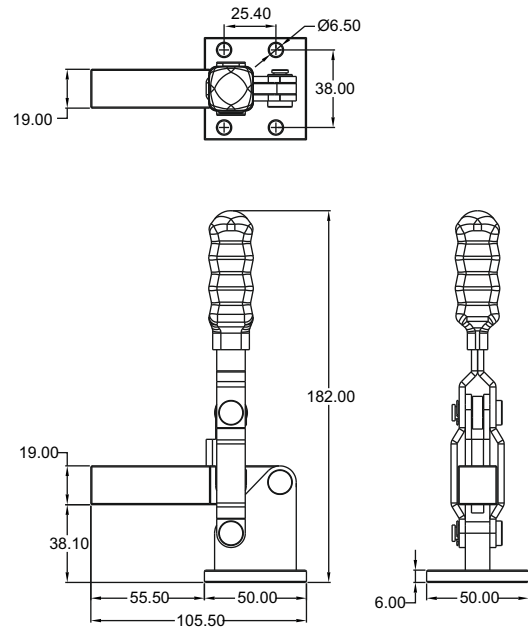
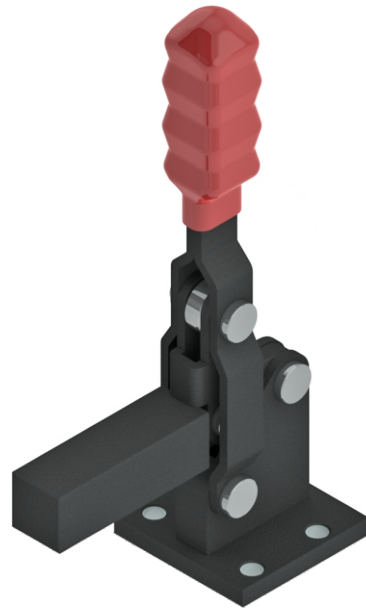


## Model No:VTC - 516 - SB

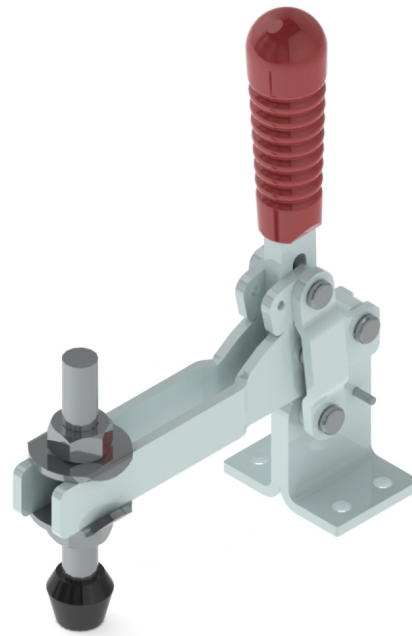
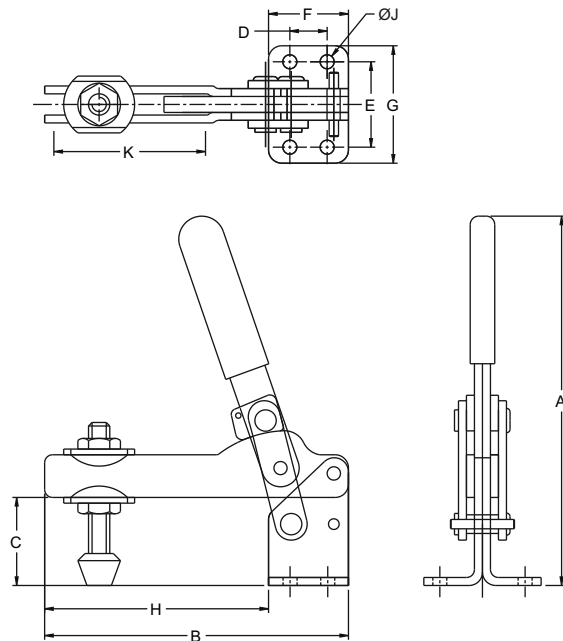
Arm: Solid Arm  
Base: Flange Mounting  
Holding Capacity: 300 Kgs.  
Weight: 0.570 Kgs.



Model No.VTC - 516 - SB

## CAM ACTION CLAMPS

Built in clamping range automatically compensates for variations in part thickness. Cam Clamps are similar to Vertical clamps but the clamping force is generated not by a toggle linkage but by the action of a roller on a cam. The Cam Clamps have a high to low limit clamping range that automatically compensates for part thickness variation & therefore eliminates time consuming readjustments. Cam Clamps are available in three sizes offering part variation thickness allowance from 3 mm to 5 mm. These clamps are ideal for fixtures designed for clamping of castings & forgings. The pivots pins, cam & its roller are hardened for higher efficiency of clamps.



Model No. CAM - 219

Model No.	Holding Capacity	Weight Kg	Handle Moves	Bar Opens	Dimensions									
					A	B	C	D	E	F	G	H	J	K
CAM - 219	150 Kgs	0.800	180	115	190.5	150.0	46.0	19.1	38.1	38.1	53.0	112.0	6.5	63.5
CAM - 229	450 Kgs	1.100	180	115	230.0	183.0	52.3	22.4	50.8	47.8	70.0	135.0	8.5	69.9