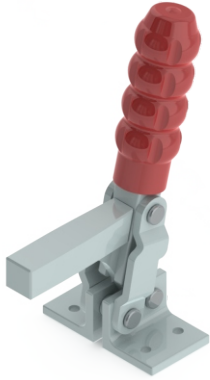


Vertical Hold Down Action

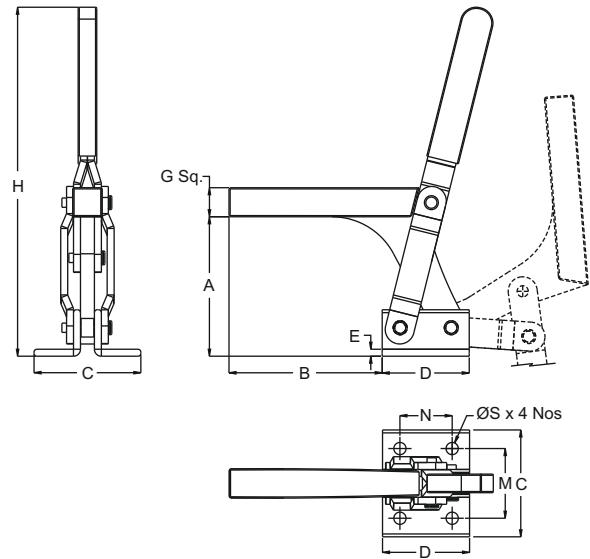
VTC Series Heavy Duty Clamps - Angle Base



Model No.VTC-6561 A



Model No.VTC-120132 A



Supplied with suitable spindle

Model No.	A	B	Mounting Base			G	H	Mounting Dimensions			L	Holding Capacity	Wt. in Kgs	Handle Moves	Bar Opens
			C	D	E			M	N	ØS					
VTC-6561 A	65	60	85	45	5.5	20 x 20	179	55	25	6.5	M10 Bolt	500 Kgs	1.000	135°	80°
VTC-120132 A	120	130	92	75	6	25 x 25	300	60	45	10.5	M12 Bolt	1000 Kgs	2.400	140°	85°

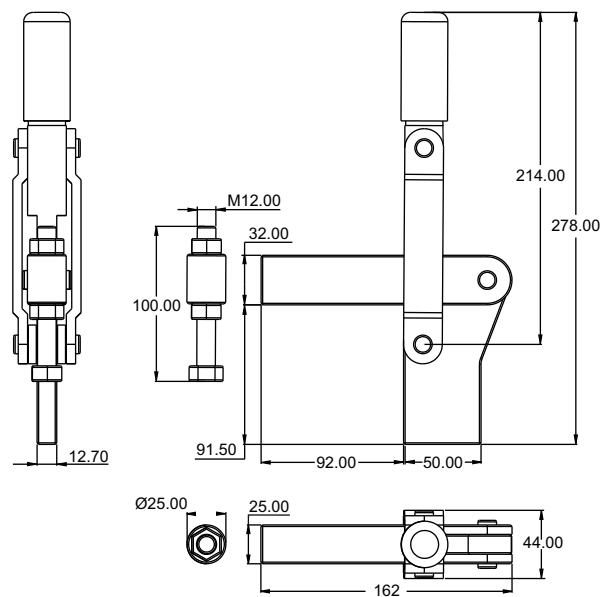
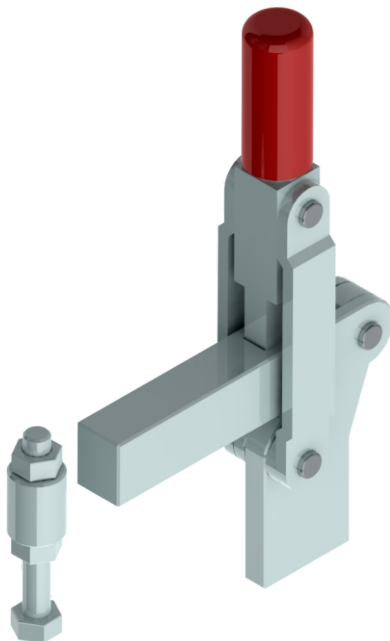
Model No:VTC - 9092 - HV - SP

Holding Capacity: 1400 Kgs.

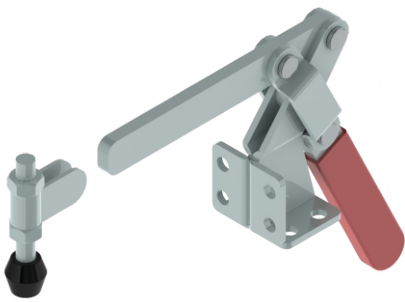
Weight: 2.600 Kgs.

Handle Moves : 140°

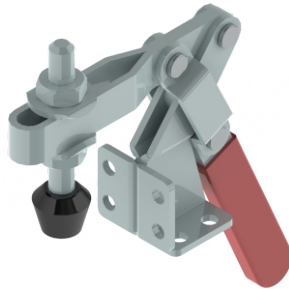
Bar Opens : 125°



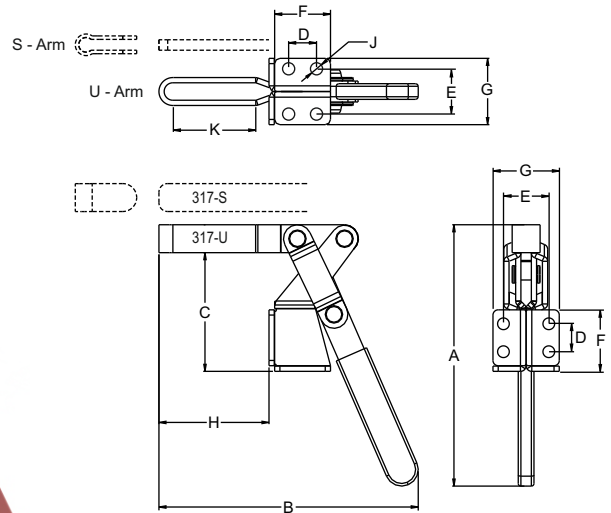
VTC 317 Series



Model No.VTC-317-S

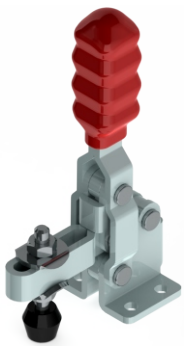


Model No.VTC-317-U

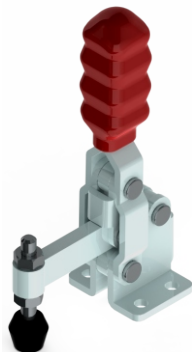


Model No.	A	B	C	D	E	F	G	H	ØJ	K	Holding Capacity	Wt. in Kgs	Handle Moves	Bar Open
VTC-317-U	138	150	68	16	25.4	35	38	64	6.7	52	170 Kgs	0.360	60°	185°
VTC-317-S	138	167	68	16	25.4	35	38	81	6.7	--	170 Kgs	0.350	60°	185°

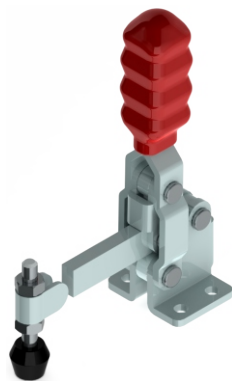
VTC Series Medium Duty Clamps Flanged Base



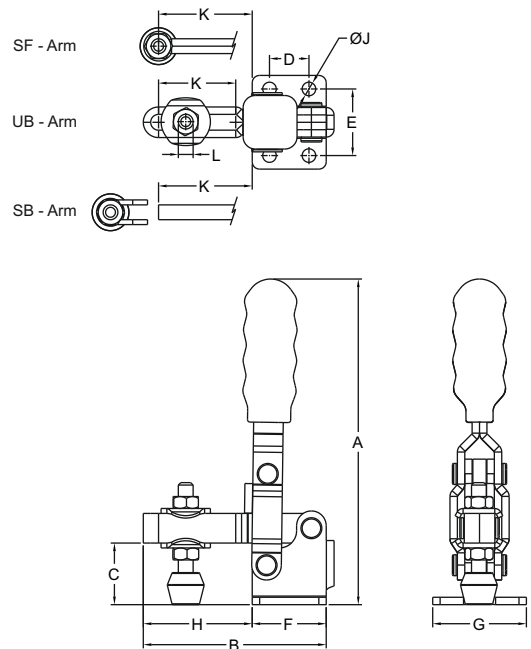
Model No.VTC-2535 UB



Model No.VTC-2535 SF



Model No.VTC-2535 SB

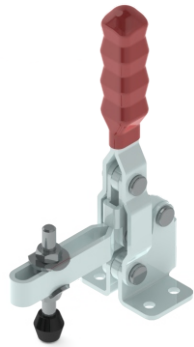


Also Available
in Stainless Steel
VTC-1625-UB-SS
VTC-2535-UB-SS

Model No.	Holding Capacity	Weight Kg	Handle Moves	Bar Opens	Dimensions										
					A	B	C	D	E	F	G	H	J	K	L
VTC - 1625 - UB	50 Kgs	0.090	65°	104°	81	56	16	16	24	25	33	31	4.5	25	M5 Bolt
VTC - 1625 - SF	50 Kgs	0.090	65°	104°	81	56	16	16	24	25	33	32	4.5	25	M5 Bolt
VTC - 2535 - UB	100 Kgs	0.180	65°	104°	125	75	25	16	27	30	38	45	5.5	32	M6 Bolt
VTC - 2535 - SF	100 Kgs	0.180	65°	104°	125	75	25	16	27	30	38	45	5.5	36	M6 Bolt
VTC - 2535 - SB	100 Kgs	0.180	65°	104°	125	73	25	16	27	30	38	43	5.5	43	M6 Bolt

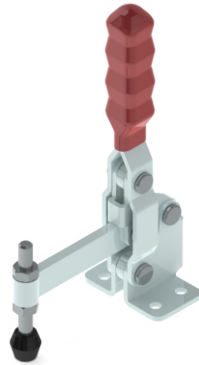
Vertical Hold Down Action

VTC Series Medium Duty Clamps Flanged Base

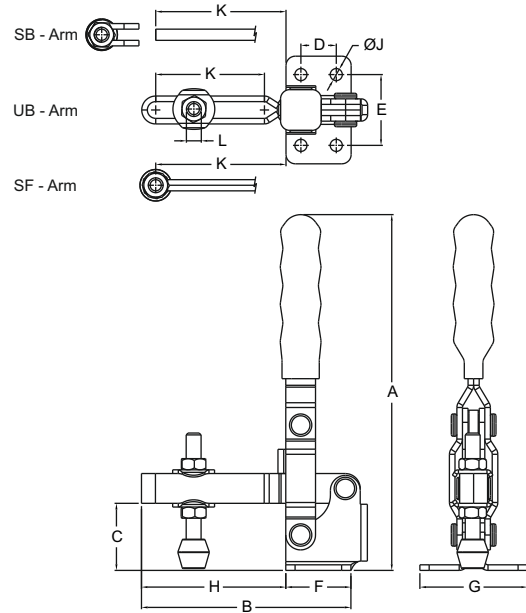


Model No.VTC-3670 UB

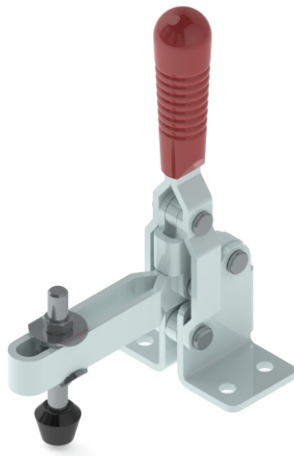
Also Available
in Stainless Steel
VTC-3670-UB-SS



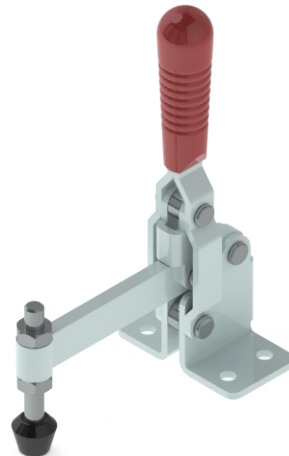
Model No.VTC-3670 SF



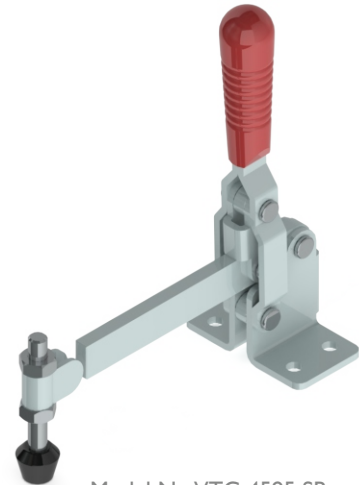
The **SF Series** have a solid hold down bar which has a fixed guide bush at its end for the spindle assembly.
The **SB Series** have a solid bar onto which the bolt retainer can be welded at any desired angle.
The **UB Series** have a 'U' bar arm which enables one or more spindles to be moved into any desired position along the arm.



Model No.VTC-4595 UB



Model No.VTC-4595 SF



Model No.VTC-4595 SB

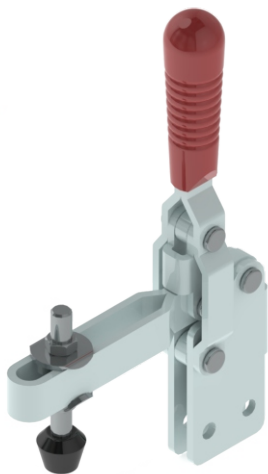
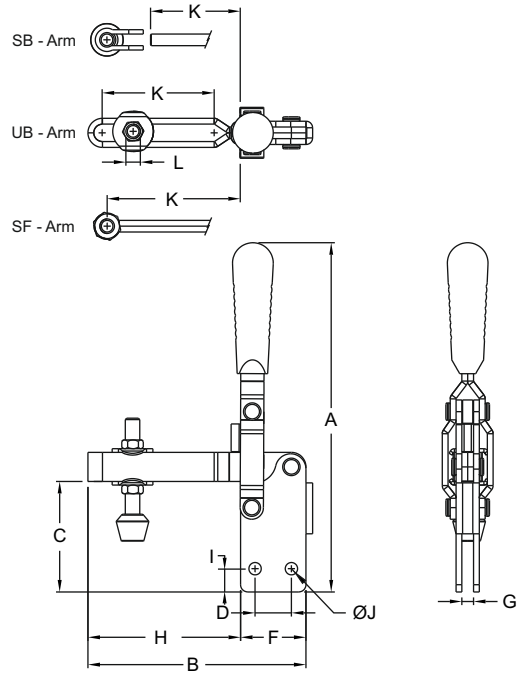
Model No.	Holding Capacity	Weight Kg	Handle Moves	Bar Opens	Dimensions										
					A	B	C	D	E	F	G	H	J	K	L
VTC-3670 UB	200 Kgs	0.450	60°	110°	178	115	36	19	38	35	58	80	6.5	61	M8 Bolt
VTC-3670 SF	200 Kgs	0.450	60°	110°	178	115	36	19	38	35	58	80	6.5	72	M8 Bolt
VTC-3670 SB	200 Kgs	0.450	60°	110°	178	102	36	19	38	35	58	67	6.5	70	M8 Bolt
VTC-4595 UB	400 Kgs	0.650	60°	120°	205	150	45	25	55	45	82	105	8.5	80	M10 Bolt
VTC-4595 SF	400 Kgs	0.650	60°	120°	205	151	45	25	55	45	82	106	8.5	95	M10 Bolt
VTC-4595 SB	400 Kgs	0.650	60°	120°	205	141	45	25	55	45	82	96	8.5	96	M10 Bolt
VTC-5040 SF	500 Kgs	0.600	60°	120°	210	99	50	25	45	45	72	135	8.5	44	M10 Bolt
VTC-50125 UB	350 Kgs	0.700	60°	120°	210	181	50	25	45	45	72	136	8.5	114	M12 Bolt
VTC-50125 SF	350 Kgs	0.700	60°	120°	210	180	50	25	45	45	72	137	8.5	125	M12 Bolt
VTC-50125 SB	350 Kgs	0.700	60°	120°	210	175	50	25	45	45	72	130	8.5	130	M12 Bolt
VTC-85150 UB	600 Kgs	2.100	107°	96°	350	238	85	45	60	76	90	162	8.5	108	M16 Bolt
VTC-85150 SF	600 Kgs	2.100	107°	96°	350	241	85	45	60	76	90	165	8.5	150	M16 Bolt
VTC-85150 SB	600 Kgs	2.100	107°	96°	350	218	85	45	60	76	90	142	8.5	142	M16 Bolt
VTC-10088 SF	800 Kgs	1.800	80°	83°	290	182	105	45	60	75	90	106	8.5	91	M12 Bolt

VTC Series Medium Duty Clamps Straight Base

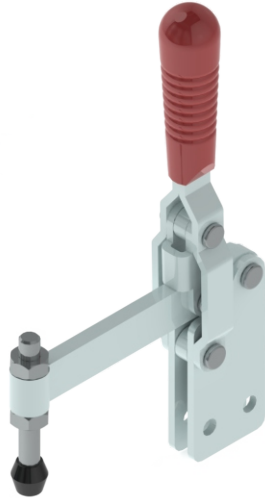
The **SF Series** have a solid hold down bar which has a fixed guide bush at its end for the spindle assembly.

The **SB Series** have a solid bar onto which the bolt retainer can be welded at any desired angle.

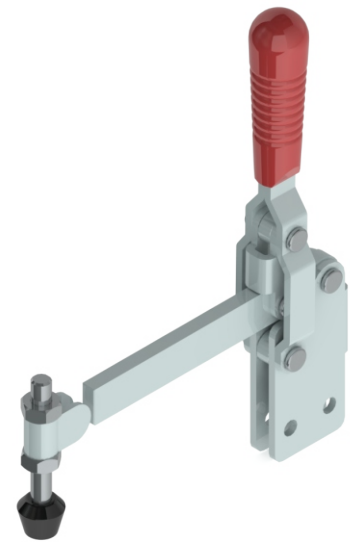
The **UB Series** have a 'U' bar arm which enables one or more spindles to be moved into any desired position along the arm.



Model No.VTC-4595 UB/BS



Model No.VTC-4595 SF/BS



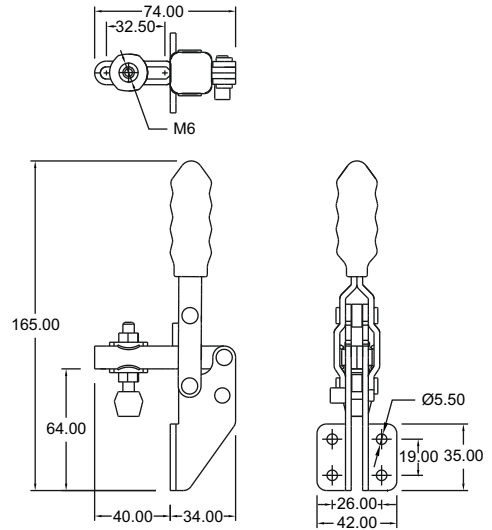
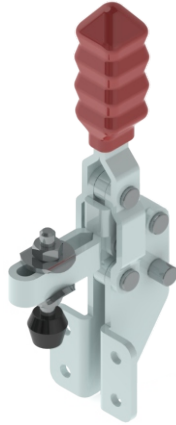
Model No.VTC-4595 SB/BS

Model No.	Holding Capacity	Weight Kg	Handle Moves	Bar Opens	Dimensions											
					A	B	C	D	E	F	G	H	I	J	K	L
VTC-2535-UB/BS	100 Kgs	0.180	65°	104°	137	75	36	15	6	30	6	45	7	5.5	32	M6 Bolt
VTC-2535-SF/BS	100 Kgs	0.180	65°	104°	137	74	36	15	6	30	6	44	7	5.5	38	M6 Bolt
VTC-2535-SB/BS	100 Kgs	0.180	65°	104°	137	72	36	15	6	30	6	42	7	5.5	42	M6 Bolt
VTC-8154-SB/BS	200 Kgs	0.300	60°	114°	232	98	79	-	-	40	6	58	-	-	58	M8 Bolt
VTC-3670 UB/BS	200 Kgs	0.450	60°	120°	198	115	57	19	6	35	6	80	8	6.5	61	M8 Bolt
VTC-3670 SF/BS	200 Kgs	0.450	60°	120°	198	115	57	19	6	35	6	80	8	6.5	72	M8 Bolt
VTC-3670 SB/BS	200 Kgs	0.450	60°	120°	198	102	57	19	6	35	6	67	8	6.5	67	M8 Bolt
VTC-4595 UB/BS	400 Kgs	0.650	60°	120°	232	150	75	25	8	45	8	105	11	8.5	80	M10 Bolt
VTC-4595 SF/BS	400 Kgs	0.650	60°	120°	232	150	75	25	8	45	8	105	11	8.5	95	M10 Bolt
VTC-4595 SB/BS	400 Kgs	0.650	60°	120°	232	142	75	25	8	45	8	97	11	8.5	97	M10 Bolt
VTC-50125 UB/BS	350 Kgs	0.700	60°	120°	232	181	75	25	8	45	8	136	11	8.5	114	M12 Bolt
VTC-50125 SF/BS	350 Kgs	0.700	60°	120°	232	182	75	25	8	45	8	137	11	8.5	125	M10 Bolt
VTC-50125 SB/BS	350 Kgs	0.700	60°	120°	232	175	75	25	8	45	8	130	11	8.5	130	M12 Bolt
VTC-85150 UB/BS	600 Kgs	2.100	107°	96°	375	238	116	45	10	76	10	162	15	8.5	108	M16 Bolt
VTC-85150 SF/BS	600 Kgs	2.100	107°	96°	375	241	116	45	10	76	10	165	15	8.5	150	M16 Bolt
VTC-85150 SB/BS	600 Kgs	2.100	107°	96°	375	218	116	45	10	76	10	142	15	8.5	142	M16 Bolt

Vertical Hold Down Action

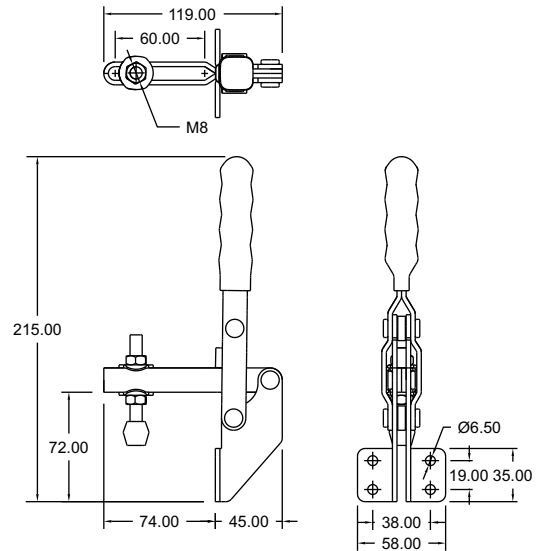
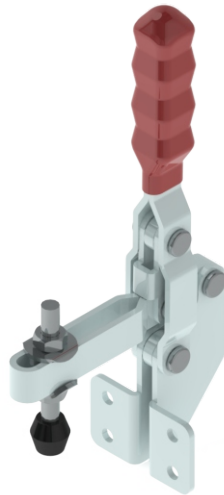
Model No:VTC - 6440 - UB/FM

Arm: Adjustable Arm
Base: Front Mounting
Holding Capacity: 100 Kgs.
Weight: 0.200 Kgs.



Model No:VTC - 7273 - UB/FM

Arm: Adjustable Arm
Base: Front Mounting
Holding Capacity: 200 Kgs.
Weight: 0.500 Kgs.



Model No:VTC - 8296 - UB/FM

Arm: Adjustable Arm
Base: Front Mounting
Holding Capacity: 500 Kgs.
Weight: 0.700 Kgs.

